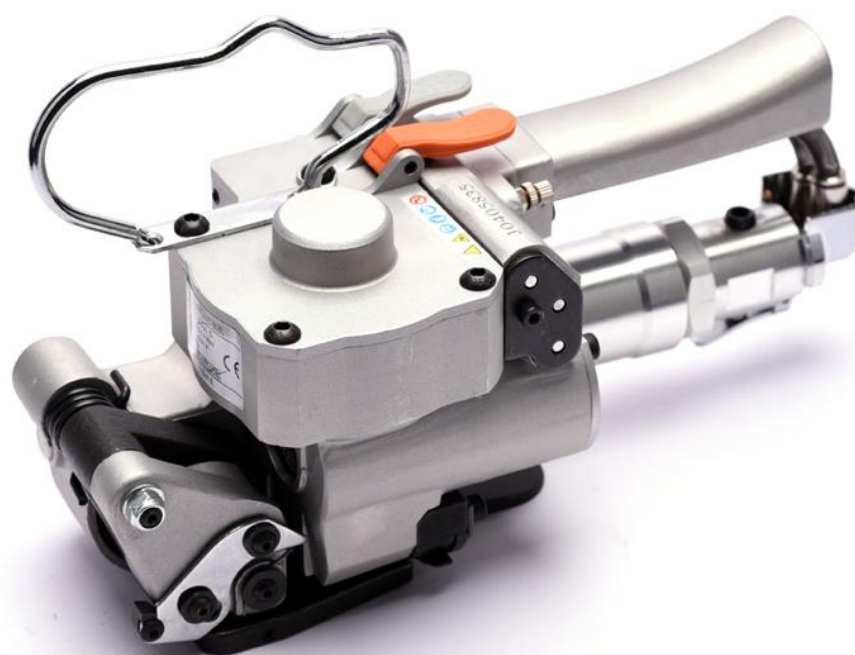
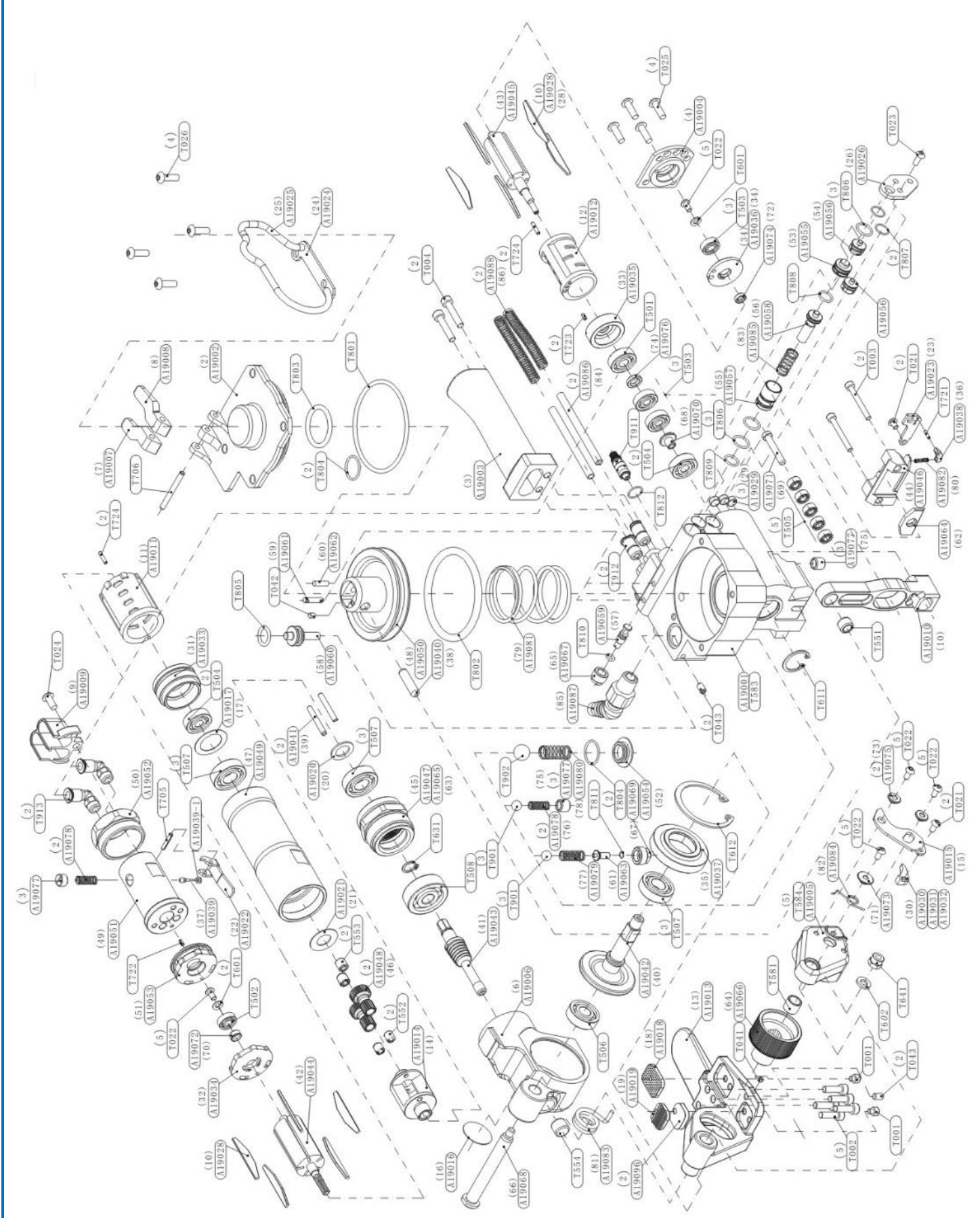


ПНЕВМАТИЧЕСКИЙ СТРЕПЦИНГ ИНСТРУМЕНТ

серии **AQD 19-25**





№.	НАИМЕНОВАНИЕ	КОД ДЕТАЛИ	КОЛ-ВО
1	Main body	A19001	1
2	Main body cover	A19002	1
3	Handle	A19003	1
4	Back cover	A19004	1
5	Front side panel	A19005	1
6	Decelerator	A19006	1
7	Tightening button	A19007	1
8	Welding button	A19008	1
9	Protecting cover	A19009	1
10	Vibration rod	A19010	1
11	Large cylinder	A19011	1
12	Small cylinder	A19012	1
13	Base	A19013	1
14	Planet carrier	A19014	1
15	Panel	A19015	1
16	Back panel	A19016	1
17	Bearing washer	A19017	1
18	Welding wheel	A19018	1
19	Strapping wheel	A19019	1
20	Front washer	A19020	1
21	Back washer	A19021	1
22	Inverting button	A19022	1
23	Cutting stopper	A19023	1
24	Handling base	A19024	1
25	Handle	A19025	1
26	Right cover plate	A19026	1
27	Blade	A19028	10
28	Sound splitter	A19029	3
29	Limit block 13	A19030	1
30	Limit block 16	A19031	1
31	Limit block 19	A19032	1
32	Large front cover	A19033	1
33	Large back cover	A19034	1
34	Small front cover	A19035	1
35	Small back cover	A19036	1
36	Bearing base	A19037	1
37	Orientation hook	A19038	1
38	Inverted valve element	A19039-1	1
39	Inverted valve rod	A19039	1
40	Oscillation pin	A19040	1
41	Planet pin	A19041	2
42	Turbine	A19042	1
43	Worm	A19043	1

№.	НАИМЕНОВАНИЕ	КОД ДЕТАЛИ	КОЛ-ВО
44	Greater trochanter	A19044	1
45	Lesser trochanter	A19045	1
46	Cutting frame	A19046	1
47	Inner wheel	A19047	1
48	Planet wheel	A19048	2
49	Motor	A19049	1
50	Piston	A19050	1
51	Valve	A19051	1
52	Connecting nut	A19052	1
53	Back bearing cap	A19053	1
54	Bonnet	A19054	1
55	Reversing bonnet	A19055	1
56	Sealed cap	A19056	2
57	Reversing valve seat	A19057	1
58	Reversing valve rod	A19058	1
59	Flowing valve rod	A19059	1
60	Pressure valve rod	A19060	1
61	Straping valve rod	A19061	1
62	Welding valve rod	A19062	1
63	Exhaust valve rod	A19063	1
64	Cutter	A19064	1
65	Internal tooth nest	A19065	1
66	Tighten wheel	A19066	1
67	Flowing valve base	A19067	1
68	Connecting pin roll	A19068	1
69	Exhaust valve base	A19069	1
70	Bearing bushing	A19070	1
71	Cutter pin	A19071	1
72	Large trochanter ring	A19072	1
73	Front side bushing a	A19073	1
74	Small trochanter ring	A19074	1
75	Front side bushing b	A19075	2
76	Gasket 12.5*3	A19076	1
77	Plugz1/8-28	A19077	3
78	Tighten valve spring	A19078	2
79	Exhaust valve pressure spring	A19079	1
80	Welding valve pressure spring	A19080	1
81	Piston spring	A19081	1
82	Cutting frame spring	A19082	1
83	Base torsional spring	A19083	1
84	Front side panel torsional spring	A19084	1
85	Position selector valve spring	A19085	1
86	Tube	A19086	2

№.	НАИМЕНОВАНИЕ	КОД ДЕТАЛИ	КОЛ-ВО
87	Air inflow contactor	A19087	1
88	Tube retainer spring	A19088	2
89	Black coating 12.9 grade m4*4	T001	2
90	Black coating 12.9 grade m5*14	T002	5
91	Black coating 12.9 grade m5*30	T003	2
92	Black coating 12.9 grade m5*20	T004	2
93	Black coating 10.9 grade m4*6	T021	2
94	Black coating 10.9 grade m4*8	T022	5
95	Black coating 10.9 grade m4*8	T023	1
96	Black coating 12.9 grade m5*10	T024	1
97	Black coating 10.9 grade m5*12	T025	4
98	Black coating 12.9 grade m6*12	T026	4
99	Black coating 12.9 grade m4*3	T041	1
100	Black coating set screw 10.9 grade m4*5	T042	1
101	Black coating set screw 10.9 grade m5*8	T043	3
102	Import bearing 608z	T501	1
103	Import bearing 619-6z	T502	1
104	Bearing 626	T503	2
105	Import bearing 626	T503-1	1
106	Import bearing 627z	T504	2
107	Bearing 685	T505	5
108	Bearing 6000z	T506	1
109	Bearing 6001 z	T507	3
110	Bearing 6300z	T508	1
111	Needle bearing hk0709	T551	1
112	Needle bearing k4*7*7	T552	2
113	Needle bearing hk0408	T553	2
114	Needle bearing bk0810	T554	1
115	Oil bearing 9*12*10	T581	1
116	Oil bearing 28*32*12	T583	1
117	Oil bearing 10*12*12	T584	1
118	Flower pattern washer Φ4	T601	2
119	Plain washer Φ6	T602	1
120	Clamp spring for hole Φ22	T611	1
121	Clamp spring for hole Φ48	T612	1
122	Clamp spring for bearing Φ10	T631	1
123	Retaining nut m6	T641	1
124	Spring pin 3*16	T705	1
125	Spring pin 4*40	T706	1
126	Column pin 2*10	T721	1
127	Column pin 2.5*6	T722	1
128	Column pin 2.5*8	T723	1
129	Column pin 2.5*12	T724	2

№.	НАИМЕНОВАНИЕ	КОД ДЕТАЛИ	КОЛ-ВО
130	Otype ring 69*3	T801	1
131	0 type ring 63.6*5.7	T802	1
132	0 type ring 28*3.55	T803	1
133	0 type ring 16*2	T804	2
134	Otype ring 11*2.5	T805	1
135	Otype ring 11*1.5	T806	3
136	Otype ring 10*1.5	T807	2
137	0 type ring 9.5*1.5	T808	1
138	0 type ring 8.5*1.5	T809	1
139	0 type ring 5*1.5	T810	1
140	0 type ring 2.5*2	T811	1
141	Nylon 6a ПФ7.95	T901	2
142	Nylon 6a ПФ12.7	T902	1
143	Throttle valve m5	T911	1
144	Straight gas contactor	T912	2
145	Corner gas contactor	T913	2
146	Hexagon socket key s2.5	T930	1
147	Hexagon socket key s3	T931	1
148	Hexagon socket key s4	T932	1
149	Open-end wrench 8-10	T933	1
150	Open-end wrench 12-14	T934	1
151	Flathead screwdriver	T935	1
152	Oiler	T980	1
153	Steel pricker	T981	1
154	Inner box (white no words)	A19089	1
155	Inner box(pneumatic)	A19090	1
156	Outer carton(two pieces)	A19091	0.5
157	Outer carton(four pieces)	A19092	0.25
158	Pneumatic pe foam strapping tools	A19093	1
159	Chinese instruction book	A19094	1
160	English instruction book	A19095	1
161	Strapping washer	A19096	2
162	Welding washer	A19097	1
163	One outer carton	A19098	1
164	Front side panel	A25001	1
165	Vibration rod	A25002	1
166	Base	A25003	1
167	Welding wheel	A25004	1
168	Strapping wheel	A25005	1
169	Orientation hook	A25006	1
170	Tightening pulley	A25007	1
171	Strapping washer	A25008	2

AQD 25